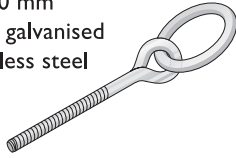


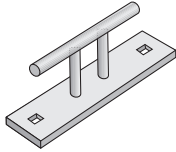
BOAT RING

12 x 80 mm
 12 x 120 mm
 12 x 200 mm
 16 x 200 mm
 16 x 260 mm
 Hot dip galvanised
 or stainless steel



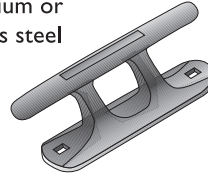
CLEAT TYPE 1

Base: 60 x 220 mm
 Height: 90 mm
 Fixing: no. 2 M12
 Hot dip galvanised



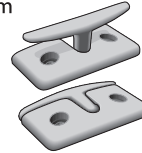
CLEAT TYPE 2

Base: 60 x 220 mm
 Height: 95 mm
 Fixing: no. 2 M12
 Aluminium or
 stainless steel



CLEAT TYPE 3

Base: 80 x 150 mm
 Height: 60 mm
 Fixing: no. 2 M8
 Aluminium

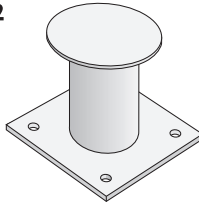


BOLLARD TYPE 1

Base: 180 x 180 mm
 Height: 150 mm
 Fixing: no. 4 M12
 Hot dip galvanised

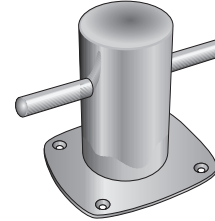
BOLLARD TYPE 2

Base: 240 x 240 mm
 Height: 220 mm
 Fixing: no. 4 M16
 Hot dip galvanised



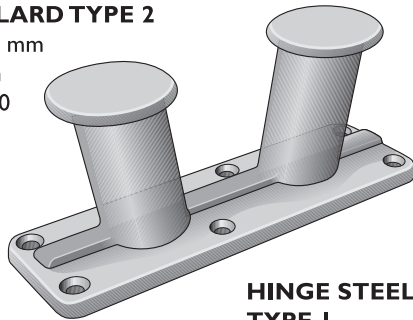
BOLLARD TYPE 3

Base: 180 x 180 mm
 Height: 185 mm
 Fixing: no. 4 M16
 Stainless steel



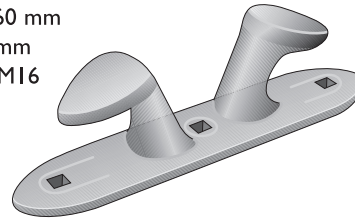
YACHT BOLLARD TYPE 2

Base: 180 x 600 mm
 Height: 240 mm
 Fixing: no. 6 M20
 Aluminium



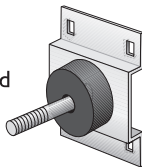
YACHT BOLLARD TYPE 1

Base: 90 x 460 mm
 Height: 125 mm
 Fixing: no. 3 M16
 Aluminium



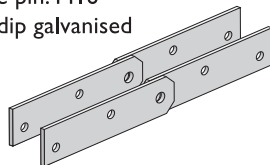
BOX HINGE

Base: 160 x 150 mm
 Fixing: no. 4 M12
 Hinge pin: M16
 Hot dip galvanised



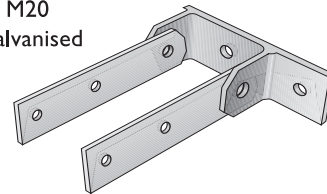
HINGE STEEL TYPE 1

6 x 60 mm
 Fixing: M12
 Hinge pin: M16
 Hot dip galvanised



HINGE STEEL TYPE 2

8 x 80 mm
 Fixing: M16
 Hinge pin: M20
 Hot dip galvanised

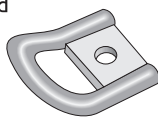


T-HINGE STEEL

Fixing: M16
 Hinge pin: M20
 Hot dip galvanised

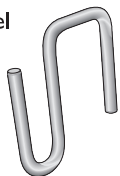
ANCHORING RING TYPE 2/TYPE 3

18 mm / 13 mm
 Fixing: M20 / M16
 Hot dip galvanised



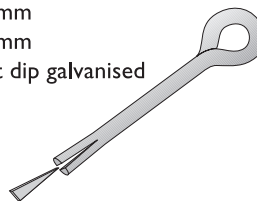
ANCHORING HOOK

9 mm
 Stainless steel



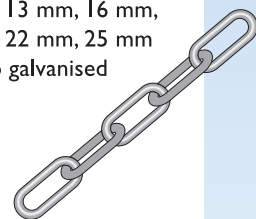
ANCHORING EYE FOR ROCK

20 mm
 22 mm
 Hot dip galvanised



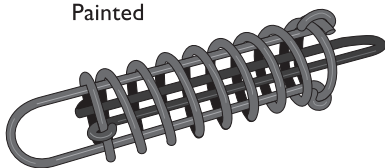
CHAIN

10 mm, 13 mm, 16 mm,
 20 mm, 22 mm, 25 mm
 Hot dip galvanised



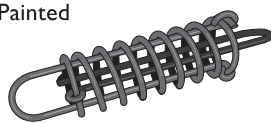
STEEL SPRING TYPE 3

Size: 150 x 700 x 16 mm
 Painted



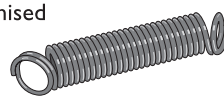
STEEL SPRING TYPE 2

Size: 84 x 450 x 12 mm
 Painted



STEEL SPRING TYPE 1

Size: 82 x 420 x 12 mm
 Galvanised



SHACKLE

12 mm, 16 mm, 20 mm,
 22 mm, 25 mm, 28 mm
 Hot dip galvanised

