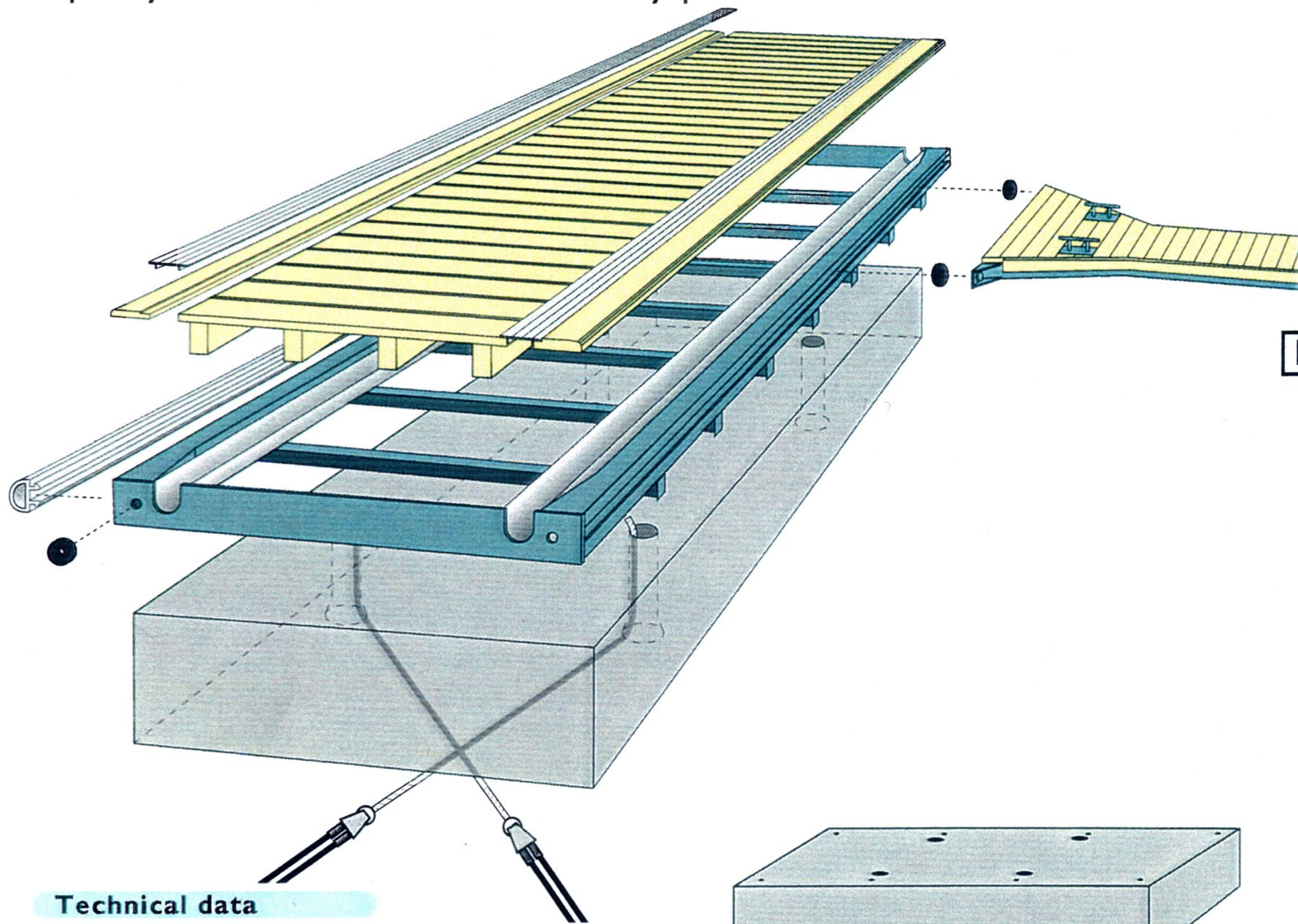


MARINETEK

SYSTEM 2500, 3100

System 2500 and **3100** are modern pontoons designed for Marinas requiring the highest standards. Both Systems have a welded, hot dip galvanized steel frame structure incorporating service ducts and universal adjustment of finger piers. Both pontoon models have a high load bearing capacity and can be moored either by piles or sinkers.



ISO 9002

Technical data

Concrete: 40 N/mm² watertight and steel reinforced fibre concrete.

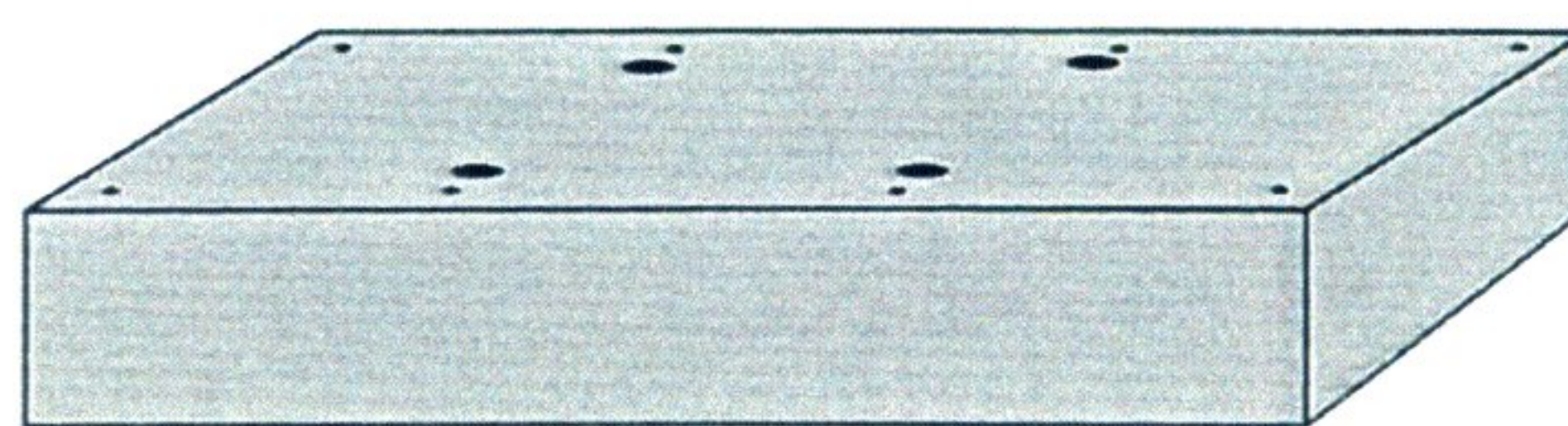
Core: Expanded polystyrene density 15 kg/m³.

Frame: Hot dip galvanized steel.

Deck: Pressure impregnated, graded and profiled pine or larch.

Standard features: Service ducts with aluminium covers and unique anchoring system.

Optional accessories: Plastic fenders and cleats.

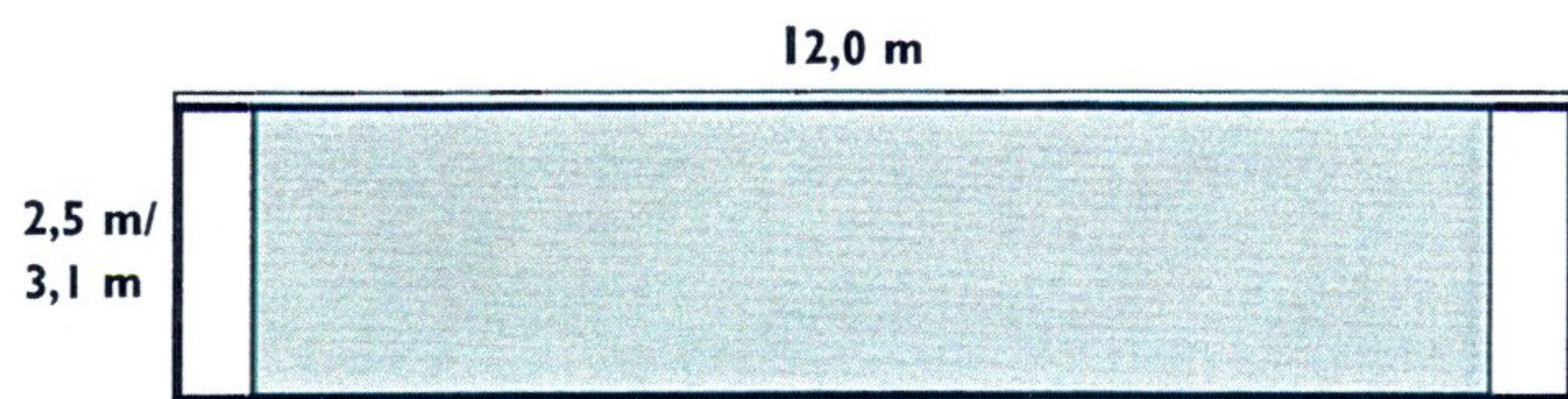


Concrete floats:

	M2411	M3011
Length:	11.00 m	11.00 m
Width:	2.38 m	2.98 m
Height:	0.7 m	0.7 m
Weight:	7220 kg	8940 kg
Net capacity:	11100 kg	13400 kg

Pontoon elements:

	H2512	H3112
Pontoon type:	System 2500	System 3100
Element size (m):	2.50 x 12.0	3.10 x 12.0
Float type:	M2411	M3011
Deck boards (mm):	(28) 34x120	(28) 34x120
Total weight (kg):	8700	10700
Net capacity (kN/m):	8.0	9.7
Net capacity (kN/m ²):	3.3	3.2
Freeboard (m):	0.55	0.55



Marinetek operates a policy of continuous development and reserves the right to change specifications without notice.

MARINETEK FINLAND OY
 VENEENTEKIJÄNTIE 2 FIN-00210 HELSINKI FINLAND
 TEL.+358 9 682 4100 FAX+358 9 682 41030
 marinetek@marinetek.fi
 www.marinetek.fi

H2512
 H3112
 M2411
 M3011